

24 PORT UTP CATEGORY 6 PATCH PANEL 1U

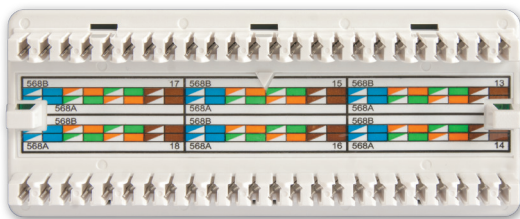


Overview

Canovate CAT.6 UTP Patch Panel is an enhanced performance patch panel used for transmission of high speed data, digital and analogue voice and video RGB signals on LANs. It supports Gigabit Ethernet (1000 BASE-T) standard and operates at bandwidths up to 250 MHz.

Highlights

- 24 port unshielded RJ45 jacks
- Contacts are phosphor bronze plated with 50 micro inches hard gold
- Class E (250MHz) acc. to ISO/IEC 11801 and EN50173
- Printed with color code TIA 568A/B, 8 pole LSA terminals
- 19" steel sheet housing



Applications

- 100 Base-TX
- 100 Base-T
- 100VG-Any LAN
- 1000 Base-T(Gigabit Ethernet)
- 1000 Base-TX

Part No	Type
KU0-0-PP1U24-C6-R45-2	24 Port Cat.6 UTP Patch Panel, 1U, Black

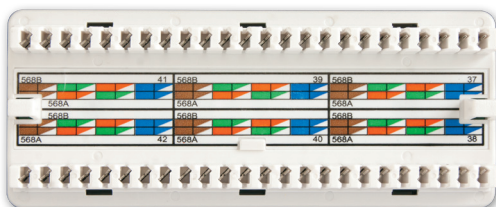
48 PORT UTP CATEGORY 6 PATCH PANEL 2U

Overview

Canovate CAT.6 UTP Patch Panel is an enhanced performance patch panel used for transmission of high speed data, digital and analogue voice and video RGB signals on LANs. It supports Gigabit Ethernet (1000 BASE-T) standard and operates at bandwidths up to 250 MHz.

Highlights

- 48 port unshielded RJ45 jacks
- Contacts are phosphor bronze plated with 50 micro inches hard gold
- Class E (250MHz) acc. to ISO/IEC 11801 and EN50173
- Printed with color code TIA 568A/B, 8 pole LSA terminals
- 19" steel sheet housing



Applications

- 100 Base-TX
- 100 Base-T
- 100VG-Any LAN
- 1000 Base-T (Gigabit Ethernet)
- 1000 Base-TX

Part No	Type
KU0-0-PP2U48-C6-R45-2	48 Port Cat.6 UTP Patch Panel, 2U, Black